

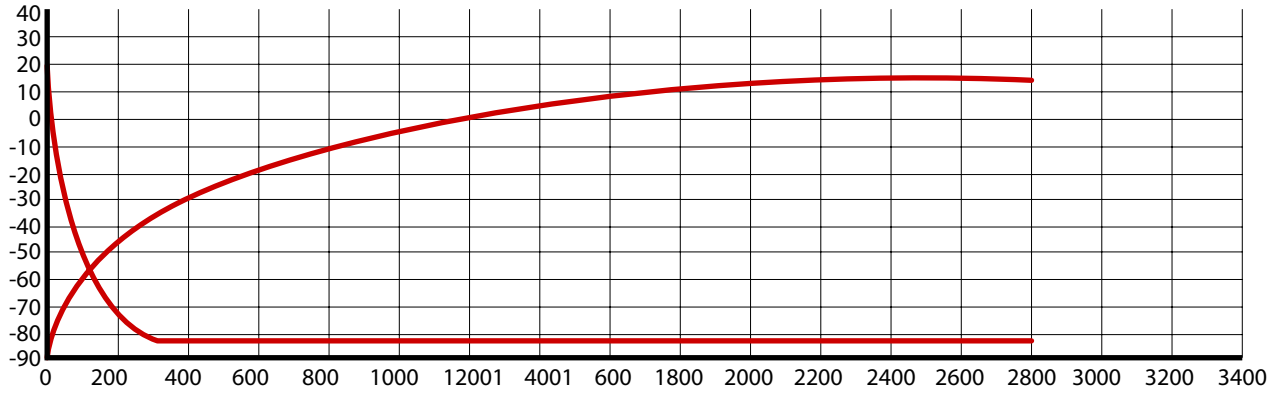
08. FREEZER



Freezer(-40℃~-86℃)98

Freezer -Feature

Temperature up/down test map



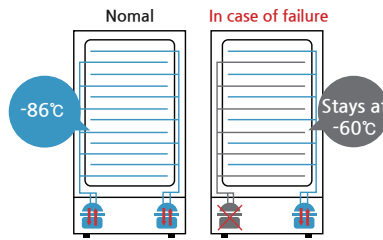
Feature



Audible and visual alarm



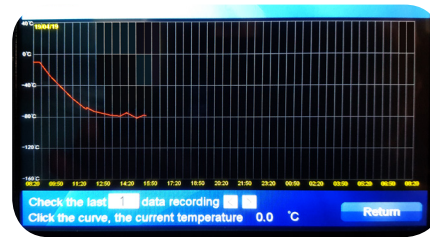
Door with vacuum release port



Independent cooling system



Low noise

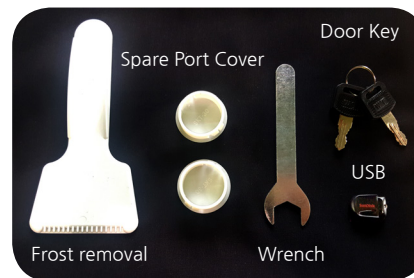


• 7" LED Touch Screen Controller with multiple control system



No.	Code	Expiration Date	State	Operate
01	12345678	04/26/2019	Under Date	Take out
02	12345671	01/10/2019	Over Date	Take out
03				Put in
04				Put in
05				
06				
07				
08				

• Sample coding system with easy storage & management



• Standard Accessory

- Data record storage case



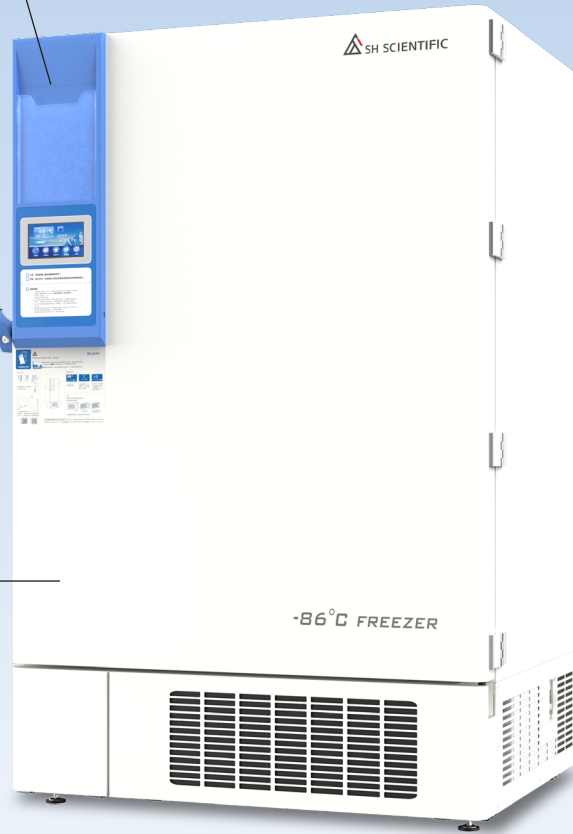
- Emergency operation system with internal battery in case of electric power shut down. (Keep displaying status of temperature/alarm)



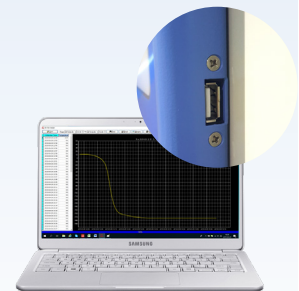
- Key Lock Door Handle



- Sensor cable port (2 ports)



- Multi Layered Sealing structure



- USB interface to download data

Freezer(-40°C~-86°C)

Power Consumption



Model		SH-DF-398S	SH-DF-528S	SH-DF-678S	SH-DF-778S	SH-DF-858S	SH-DF-1008S
Capa	L	398 L	528 L	678 L	778 L	858 L	1008 L
	2"Box	25 ea x 12 racks	25 ea x 16 racks	25 ea x 20 racks	25 ea x 24 racks	25 ea x 24 racks	25 ea x 28 racks
	3"Box	20 ea x 9 racks	20 ea x 12 racks	20 ea x 15 racks	20 ea x 18 racks	20 ea x 18 racks	20 ea x 21 racks
Total(2"Box)		300 ea	400 ea	500 ea	600 ea	600 ea	700 ea
Insulation		155 mm foaming insulation with VIP+					
Dimension External (W×D×H)		785x1041x1947mm	930x1041x1947mm	1090x998x1955mm	1205x994x1955mm	1218x997x1998mm	1363x997x1998mm
		30.90x41.02x76.65"	36.61x41.02x76.65"	42.91x39.29x76.97"	47.44x39.13x76.97"	47.95x39.25x78.66"	53.66x39.25x1998"
Dimension Internal (W×D×H)		440x696x1266mm	585x696x1266mm	750x696x1268mm	865x696x1268mm	877x696x1378mm	1022x696x1378mm
		17.32x27.40x49.84"	23.03x27.40x49.84"	29.52x27.40x49.92"	34.06x27.40x49.92"	34.53x27.40x54.25"	40.24x27.40x43.25"
Input power		1050 W	1050 W	1550W	1550 W	1550 W	1950 W
Power Supply		220V, 60Hz					

Option

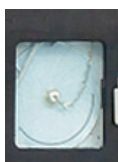


Chart recorder



CO2 back up system



Sliding Rack & 2"(3")Boxes

Option

Data Monitoring System °C Lux ...

Online Real-time

FDA 21 CFR Part 11 Compliance



Wi-Fi



- Stable data transmission technology
- Easy & simple way of App installation and maintenance via wireless access

Real-time Monitoring



- Monitoring the status of operation on real-time through mobile & smart pad devices

Push / SMS Alert



- Automatic remote notification to mobile devices when any errors occurred
- Multiple access to Real-Time Monitoring system

Wireless Display Monitor



- Worldwide access to Real-Time Monitoring system under Wi-Fi environment
- Intergrated data management of testing data in multiple locations

Data Server



- Interoperable data storage & backup through website log-in
 - Data Graph output
 - User setting of temperature & SMS in engineer mode